

**MAYNE  
MINERALS INC.**

**BELL GRAPHITE MINE  
BUCKINGHAM, QUEBEC**

**JUMBO AND LARGE FLAKES**

# LEGAL STATEMENT

Information contained in this presentation is the property of Mayne Minerals Inc. (the “Company”). This presentation does not constitute, or form part of, any offer or invitation to sell or issue, or any solicitation of any offer to subscribe for or purchase any securities in the Company, nor shall it, or the fact of its communication, form the basis of, or be relied upon in connection with, or act as any inducement to enter into, any contract or commitment whatsoever with respect to such securities. The communication of this presentation in or to persons in certain jurisdictions may be restricted by law and persons who may receive communication of this presentation should inform themselves about, and observe, any such restrictions in advance of communication to them of this presentation.

No securities exchange or affiliated service provider has reviewed or accepts responsibility for the adequacy or accuracy of the content of this presentation. The material contained in this presentation is provided solely for your general knowledge and is not intended to be a comprehensive review of all matters and developments concerning Mayne Minerals Inc. or its affiliates.

The Company has taken all reasonable care in producing the information contained in this presentation. This information may contain technical or other inaccuracies, omissions, or typographical errors, for which the Company assumes no responsibility. Mayne Minerals Inc. makes no representation or warranty regarding, and assumes no responsibility for, the use, validity, accuracy, completeness, reliability or currency of any claims, statements or information in this presentation. To the extent permitted by law, Mayne Minerals Inc. and its employees, agents, affiliates and consultants exclude all liability for any loss or damage arising from the use of, or reliance on, any such information, whether or not caused by any negligent act or omission. Statements in this presentation other than purely historical information, including statements relating to the Company’s future plans, objectives or expected results, constitute forward-looking statements within the meaning of Canadian securities laws.

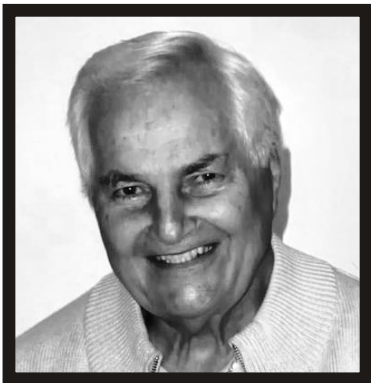
# ABOUT MAYNE MINERALS

Mayne Minerals Inc. is developing its operations with the highest research standards for historical mining data to acquire value-assets by taking advantage of what the world needs today.

We are favourably positioned to target the growing demand for one of the main minerals required by growing green electric industries. Our qualifying property, the Bell Graphite Mine (BELL), is a proven resource an open-pit mine previously in production in the 1950's.

The property is located in a very active graphite exploration and production area near Imerys Carbon and Graphite (OTC: IMYSF) & Nouveau Monde (TSXV: NOU).

Jumbo and large flake graphite are in demand right now with the global shift to become more environmentally conscious. We are focused on listing on the Canadian Securities Exchange with BELL as our qualifying property to become an issuer.



## From the President & CEO

After 65 years in the mining industry I'm excited to be able to advance the Bell Graphite Mine to another level. There are many new targets to be investigated prior to a fall drilling program.

I'm continuing my research for new acquisitions for the company to increase shareholder value. It is a joy and pleasure to work with professionals on all levels to make my dream a reality.

I look forward to blue skies ahead!

A handwritten signature in black ink that reads "Robert Rosenblat". The signature is written in a cursive, flowing style.

Robert Rosenblat

# LOCATION:

IN THE REGION OF THE BIG LEAGUE GRAPHITE PRODUCERS.



Multinational conglomerate

NOUVEAU MONDE  
MATAWINIE PROJECT

Set to become the Western World's Largest Graphite Mine.



 GRAPHITE MINERALIZED OCCURRENCES (SIGEOM, 2014)



# RESULTS OF THE DRILL HOLES FROM WHEN BELL MINE WAS IN PRODUCTION.

**OUR GRADES ARE SIGNIFICANTLY HIGHER** (refer to page 6.)

1952-54  
BELL MINE  
FROBISHER DDHS  
TABLE NO 4

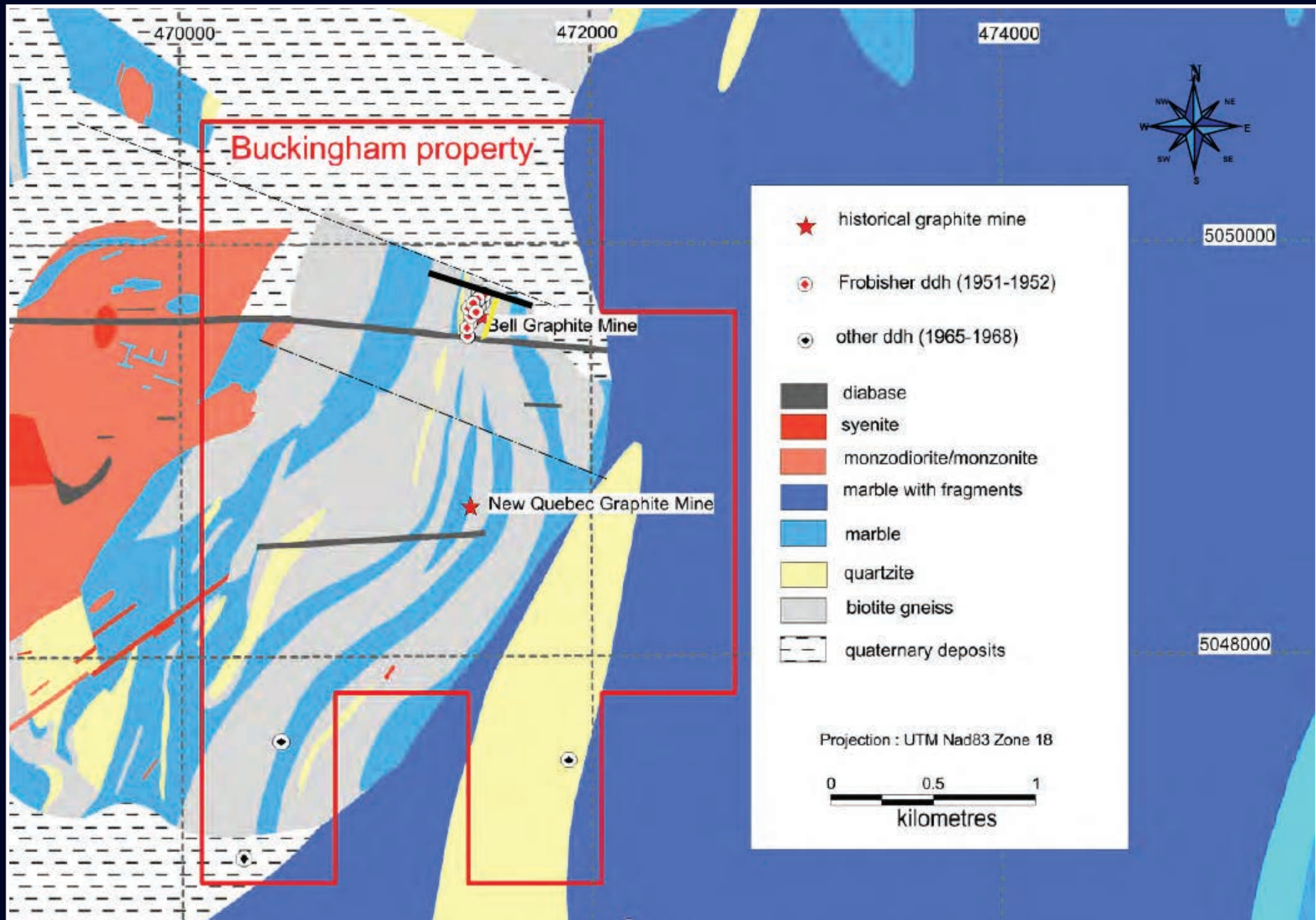
HOLE No.	SECTION	ANGLE °	DEPTH m	GRAPHITE INTERSECTION From (m) To (m)		THICKNESS	GRADE C%
B-1	N-0	-35	53.34				
B-2	N-0	-58.5	60.96				
B-3	N-2	-35	38.40	28.04	30.79	2.74	<b>8.9</b>
B-4	N-2	-58.5	43.59				
B-5	N-1	-35	47.55				
B-6	N-1	-58.5	55.78	34.75	39.01	4.27	<b>5.8</b>
B-7	N-3	-35	55.47	34.75	40.23	5.49	<b>7.3</b>
B-8	N-3	-72	73.46	41.15	46.94	5.79	<b>8.3</b>
B-9	N-4	-70	64.31	31.70	37.19	5.49	<b>10.7</b>
			47.55	50.44	2.90	10.8	
B-10	N-4	-90	79.86	47.40	55.17	7.77	<b>10.5</b>
			69.49	69.80	0.31	8.6	
B-11	N-5	-45	54.86	22.86	27.43	4.57	<b>11.2</b>
			34.75	37.4	2.29	12.8	
B-12	N-5	-70	52.43	26.52	32.62	6.10	<b>12.7</b>
			42.98	45.12	2.13	8.9	
B-13	N-5	-90	60.96	40.39	48.46	8.08	<b>12.1</b>
B-14	N-6	-45	38.10				
B-15	N-6	-70	58.52	35.97	42.06	6.10	<b>13</b>
			52.73	53.49	0.76	13.2	
B-16	N-7	-45	68.28				
B-17	N-7	-70	46.94	34.14	43.89	9.75	<b>10.3</b>
B-18	N-7	-90	70.41	50.90	63.25	12.34	<b>8.90</b>
B-19	N-7	-50	55.93	28.96	32.61	3.66	<b>11.7</b>
B-20	N-7	-75	96.01	85.34	93.12	7.77	<b>9.50</b>

"The following are excerpts from a 43-101 Report to Mayne Minerals Inc. dated \* Feb 2021 \* "a complete copy is available on request"

## BELL GRAPHITE MINE GRADES ARE **MUCH HIGHER**

SECTION	HOLE	HORIZON	FROM	TO	WIDTH	TRUE WIDTH	GRADE
S1800	TO-15-06	S1	13.7	48.8	35.1	35.0	35.1m @ 4.74%
		S2	92.7	143.5	50.8	49.1	50.8m @2.79%
S1700	TO-15-07	S1	42.4	70.2	27.8	26.9	27.8m @4.92%
		S2A	114.1	151.5	37.4	36.1	37.4m @3.28%
		S2B	162.8	171.3	8.5	8.2	8.5m @3.25%
S1600	TO-15-09	S1A	3	12.3	9.9	9.0	9.3m @4.11%
		S1B	23.9	31	701	6.9	7.1m @3.21%
		S1C	36.5	50.7	14.2	13.7	14.2m @4.88%
		S1D	57.2	64.4	7.2	7.0	7.2m @4.55%
		S2	129.7	162	32.3	31.2	32.3m @3.09%
S1500	TO-15-10	S1A	12.6	56.5	43.9	42.4	43.9m @4.78%
		S1B	67.2	70.5	3.3	3.2	3.3m @ 4.58%
		S2	84.9	122.5	37.6	36.3	37.6m @4.10%

# DEPOSITS ARE FOUND IN THE HOST ROCK (THE BLUE MARBLE)



LOCAL GEOLOGY

SOURCE: HEBERT, 1998; R. CHARBONNEAU, 2015

BELL GRAPHITE MINE, BUCKINGHAM, QUEBEC.

## MINERAL RESOURCE ESTIMATES (cont.)

The Author recognizes the importance of the **Indicated Mineral Resource** category to the advancement of the feasibility of the project. An Indicated Mineral Resource estimate is of sufficient quality to support a **Pre-Feasibility Study** which can serve as the basis for major development decisions.

## BASE CASE

With a prioritization of the grade and considering the zone continuity optimization, the Author considers that the **1 950 000 tonnes at 5.1% graphite**, is the preferred scenario. This one is also identified as the base case for an Indicated Mineral Resource.

## QUALITY CONTROL

Visual observation on sections confronting the grade assay and the coincident estimated block does not present any bias. Some blocks that present a deficiency are related to the distance of the diamond drill holes to the projection plane.

## OBSERVATIONS, DISCUSSIONS AND INTERPRETATION

The Author considers that the project is a reasonable prospect for **eventual economic extraction**. The zone is heavily transposed but there is a good **continuity even at high cut off grade**.

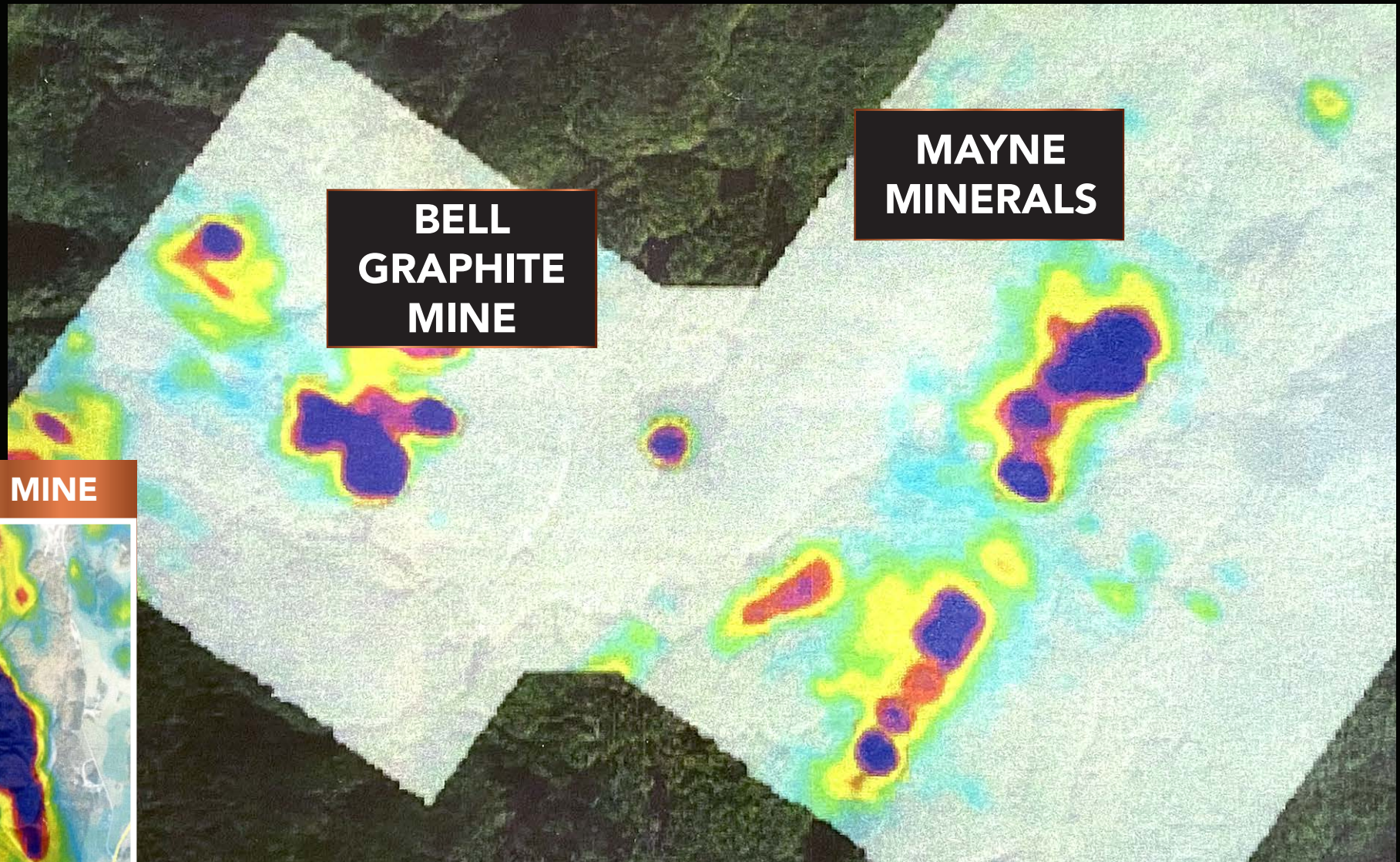
The metallurgical recovery, processing method and mining do not seem to be problematic, since the project has been the subject of a profitable exploitation in the past. Some evidences of the presence of a flotation plant in use a Century ago are still visible. Other factors like royalty payments, commodity price or product value, mining and, processing and general and administrative costs are not evaluated but do not seem to be actually problematic.

The Author is not aware by any known environmental, permitting, legal, title, taxation, socioeconomic, marketing, political, or other relevant factors that could materially affect the mineral resource estimates.

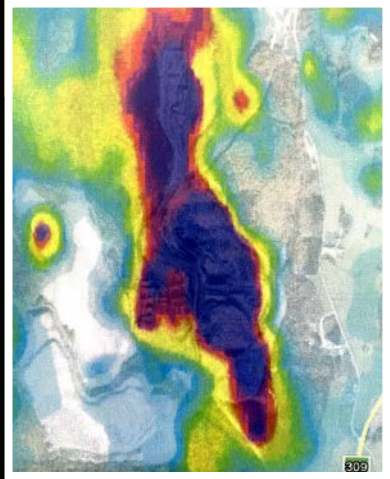


# BELL GRAPHITE MINE & MAYNE MINERALS

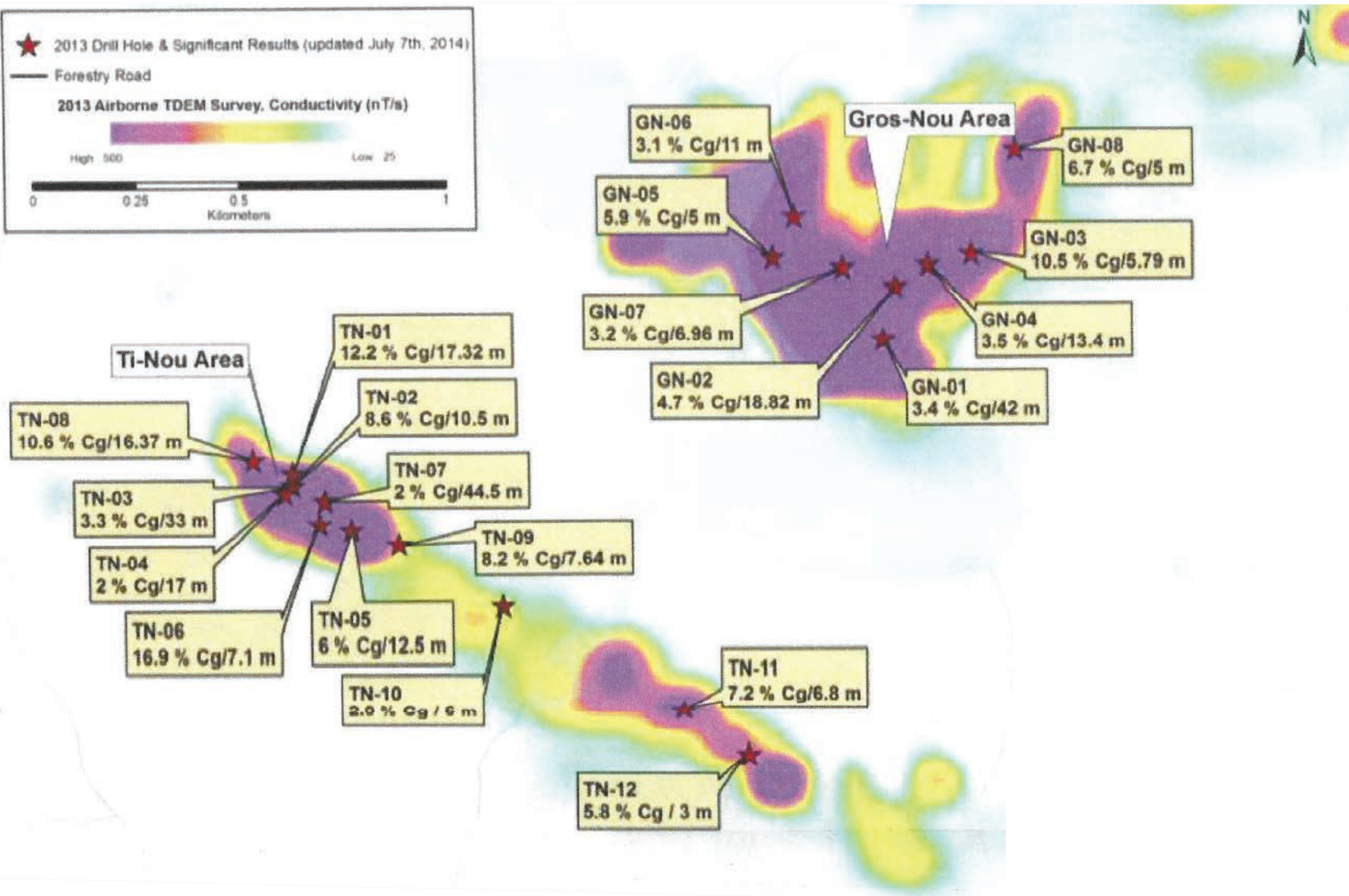
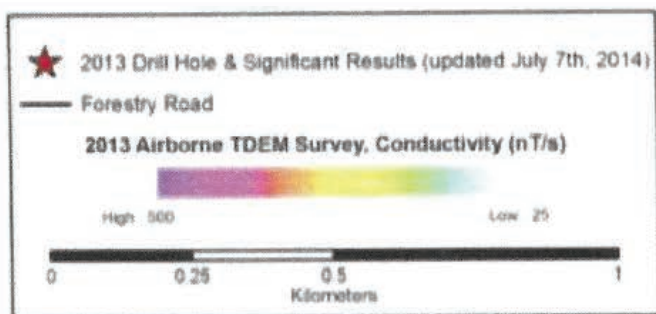
 PURPLE ANOMALIES ARE INDICATIVE OF GRAPHITE FOUND BY AIRBORNE SURVEY.



**IMERY'S MINE**







# COMPARABLE COMPANY ANALYSIS

COMPARE THE GRADE AND VALUE OF EACH COMPANY.  
**BELL GRAPHITE MINE GRADE IS HIGHER**

	NOUVEAU MONDE TSX.V: NOU	MASON GRAPHITE TSX.V: LLG	NORTHEN GRAPHITE TSX.V: NGC	FOCUS GRAPHITE FMS.V: LLG
<b>STAGE <sup>1</sup></b>	PFS	Feasibility	Feasibility/ PEA	Feasibility
<b>GRAPHITE DEPOSIT</b>				
Size in Mt	33	4.7	28.3	7.9
Grade % (Avg. LOM)	4.5%	27.80%	2.06%	15.30%
Life of mine (Years)	27	25.0	21.0	25.0
Annual Production (tons)	52,000	51,900	33,200	44,300
<b>AVERAGE SALES PRICE (USD/ton) <sup>2</sup></b>	1,429	1,133	1,675	1,327
<b>OPERATING MARGIN (CAD/ton)</b>				
<b>Average Sales Price</b>	<b>\$1,900</b>	<b>\$1,453</b>	<b>\$2,147</b>	<b>\$1,702</b>
Production Cost	\$539	\$376	\$795	\$441
Transportation to Montréal <sup>3</sup>	\$18	\$75	\$48	\$134
<b>Total Cost</b>	<b>\$678</b>	<b>\$451</b>	<b>\$843</b>	<b>\$575</b>
<b>EBITDA per ton</b>	<b>\$1,343</b>	<b>\$1,002</b>	<b>\$1,304</b>	<b>\$1,127</b>
Initial CAPEX in M CAD	\$181	\$166	\$102	\$166
Total CAPEX in M CAD	\$207	\$214	\$191	\$208

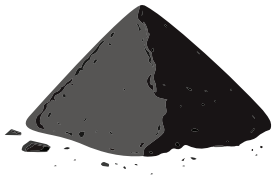
1 Source: Results based on latest NI 43-101 Pre - Feasibility Study and / or Feasibility Study including NOU, LLG,BGC, and FMS.

2 Source: Benchmark Minerals Intelligence prices for the las 60 months before September 2017; USD /CAD exchange rate of 1.33 as of 7/22/17.

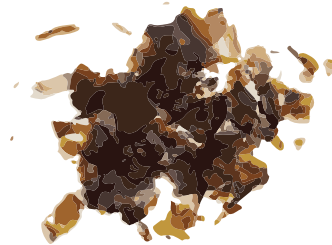
3 Transportaion costs to Montréal, QC are estimated at \$0.11CAD/tonne/km based on quote from independent 3rd party transport company

# GRAPHITE TO GRAPHENE OXIDE CONVERSION BY MODIFIED HUMMERS METHOD

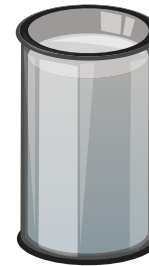
NATURAL FLAKE GRAPHITE CONCENTRATE



GRAPHENE OXIDE (GO)



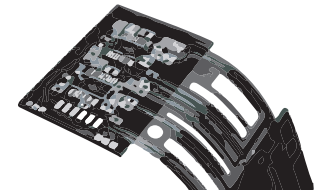
[GO] SOLUTION



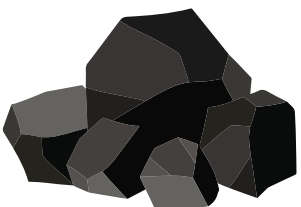
BETTER ANODE MATERIAL FOR BATTERIES



FLEXIBLE PRINTED CIRCUIT



FLAKE GRAPHITE ORE MATERIAL



CONDUCTIVE COATING

?????



# STRONG METALLURGICAL RESULTS

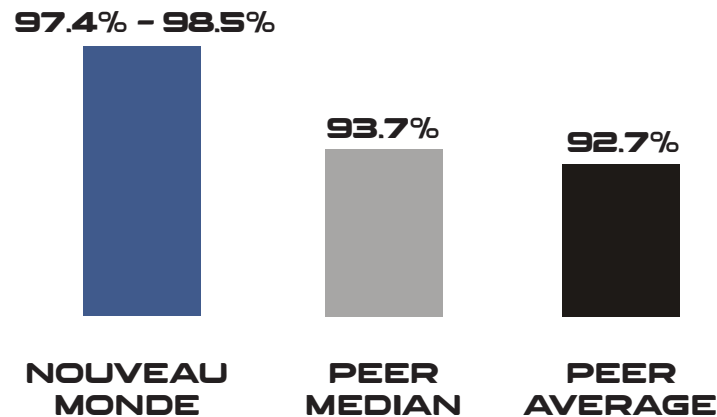
TSXV : NOU

Nouveau Monde is a leader among peer companies in purity and percentage of large flakes, two critical economic attributes

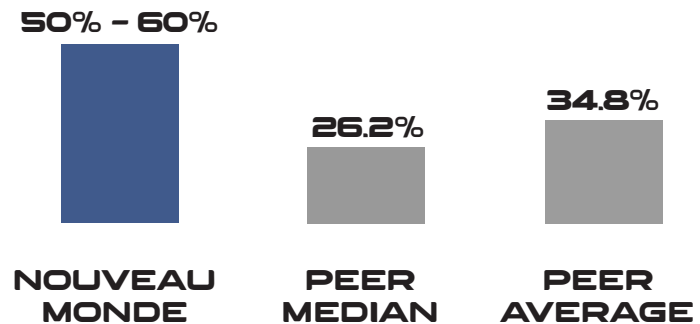


"TMR estimates that the cost difference in purifying a 95% Cg concentrate to 99.9% Cg could be as much as \$2-3,000/t of concentrate, using thermal processes."

## PURITY (AFTER FLOTATION ONLY)\*



## PERCENTAGE OF LARGE FLAKES\*



NOUVEAU MONDE GRAPHITE

\*Nouveau Monde results based on NI 43-101 Mineral Resource Estimate for the South-East and South-West Zones only - scopings study (December 15, 2015) Metallurgical testing performed by SGS Canada, Inc. (October 6, 2014). Peer results based on latest Preliminary Economic Assessment or Feasibility Study. Peer group companies include: FMS, NGS, LLG, ALP, and ZEN.

# COMPARISON AMONGST GRAPHITE PUBLICLY TRADED COMPANY IN NORTH AMERICA

COMPANY	SYMBOL	SHARES OUT	\$PER SHARE	MARKET CAP	DEVELPMENT STAGES	GRADE %Cg	+80 MESH CONTENT
Northen Graphite	BGC	49M	0.63 \$	30M	43-101 Feasibility Study	1.90%	75%
Focus Graphite	FMS	120M	0.22 \$	26M	43-101 Feasibility Study	15%	33%
Mason Graphite	LLG	86M	0.50 \$	43M	43-101 PEA	17.00%	29%
Zenyatta Ventures	ZEN	55M	1.50 \$	127M	43-101 Resource calculation	3 to 5%	0%
Alabama Graphite	ALP	100M	0.20 \$	20M	43-101 Resource calculation	2.60%	22%
Nouveau Monde	NOU	35M	0.15 \$	5M	Discovery confirmed by drilling	5-7%	60%

AS OF JUNE 22<sup>nd</sup> 2015



SAMPLE NO	LOCATION	DESCRIPTION WITH VISUAL GRAPHITE CONTENT
BG15-01	Small Pit	Paragneiss intermixed with carbonated bands. 3-5% graphite flakes (up to 2 mm) with 2% of sulphides
BG15-02	Small Pit	Carbonated gneiss, grey to brown in color, medium-grained. 2-3% graphite with traces of sulphides
BG15-03	Bell Graphite Mine	Paragneiss intermixed with carbonated rock (marble). Gray to brown in color, medium grained. <b>10-15% LARGE FLAKE</b> (2-3 mm) of graphite.
BG15-05	New Qc Graphite Co.	West pit (block from stockpile) Marble or carbonated paragneiss. Fine to medium grained gray rocks. Calcite mineral (10-15%) with diopside (2%). <b>10-15 % GRAPHITE</b>
BG15-06	New Qc Graphite Co.	West pit (block from stockpile) Pegmatite (quartz and feldspath). <b>VERY LARGE GRAPHITE</b> flake (2-5%). Seems to fill micro fractures at some places.
BG15-08	New Qc Graphite Co.	East pit (block from stockpile). Strongly schistozed gneiss. Black in color. 15-20% graphite <b>(MOSTLY LARGE FLAKE).</b>

"The following are excerpts from a 43-101 Report to Mayne Minerals Inc. dated \* Feb 2021 \* "a complete copy is available on request"

## SAMPLES TAKEN FROM SURFACE 1952 & 2017 INDICATING PERCENTAGE OF GRAPHITE.

NOVEMBER 2017  
DATA VERIFICATION

DDH	NB OF SAMPLES	NB OF CG%	MAX CG%
BL1952s03	4	4	4.45
BL1952s04	5	5	3.85
BL1952s05	3	3	3.60
BL1952s06	4	4	3.60
BL1952s07	3	3	5.70
BL1952s08	6	6	9.45
BL1952s09	5	5	7.60
BL1952s10	6	6	6.05
BL1952s11	4	4	6.40
BL1952s12	4	4	7.50
BL1952s13	4	4	8.60
BL1952s14	1	1	5.15
BL1952s15	5	5	8.45
BL1952s17	10	10	8.00
BL1952s18	10	10	6.90
BL1952s19	4	4	7.70
BL1952s20	7	7	8.50
BL1952s21	7	7	7.30
BL1952s22	6	6	7.20
BL1952s23	11	11	6.80
BL1952s24	4	4	7.40
BL1952s25	11	11	8.65
BL2017s01	20	20	6.88
BL2017s02	22	22	9.65
BL2017s03	32	32	8.51
BL2017s04	39	39	10.15
BL2017s05	28	28	9.83
BL2017s06	22	22	6.96
BL2017s07	22	22	7.40
BL2017s08	26	26	5.97
BL2017s09	23	23	5.46
BL2017s10	16	16	1.48
BL2017s11	40	40	0.98
<b>Total</b>	<b>414</b>	<b>414</b>	<b>10.15</b>

"The following are excerpts from a 43-101 Report to Mayne Minerals Inc. dated \* Feb 2021 \* "a complete copy is available on request"

# VERIFICATION WORK

## 2017 PROSPECTING

A NE oriented ridge, located about 400 m west of the old mine, revealed the presence of **jumbo flakes in a 5 to 10 m thick calcosilicated paragneiss**. Three grab samples taken over a distance of 100 m returned the following assays:

P-269301	<b>6.75 % Cg</b>	12.30% Ca	1230ppm P
P-269302	<b>14.35 %Cg</b>	0.32 %Ca	150PPM P
P-269303	<b>16.90 % Cg</b>	2.92 % Ca	2730ppm P

"The following are excerpts from a 43-101 Report to Mayne dated \* Nov 2017 \* " a complete copy is available on request"

# WHY INVEST



The "Bell Mine" has been classified by the Quebec Government as one of Critical Strategic Material.



Numerous new geophysical targets have to be stripped and sampled.



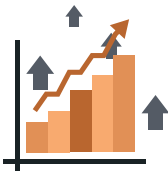
The Bell Mine is Open Pit on waste farmland adjoining township roads.



The Bell Mine possess the critical type of graphite Jumbo & Very Large Flakes



The Quebec Government gives a 32% rebate for exploration work.



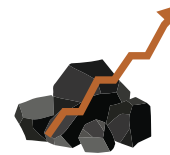
Mayne Minerals is rapidly being financed with an IPO between \$0.35 - \$0.50



The mine is a former producer from 1952 - 1954



New drilling, \$600,000 spent in 2017 has outlined 1,950,000 tonnes of 5.4% CG



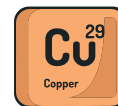
The CG content is higher than Nouveau Monde, Northern Graphite and Zen Graphite.



The property is located 30 miles east of Hull, Quebec near Buckingham.



Work can continue year-round and no interference from native concerns.



In addition, the company will be heavily and directly involved in some outstanding copper plays in B.C.

# MAYNE MINERALS FUTURE

carbon  
6  
**C**  
12.011

copper  
29  
**Cu**  
63.546

platinum  
78  
**Pt**  
195.08

palladium  
46  
**Pd**  
106.42

silver  
47  
**Ag**  
107.87

gold  
79  
**Au**  
196.97

nickel  
28  
**Ni**  
58.693

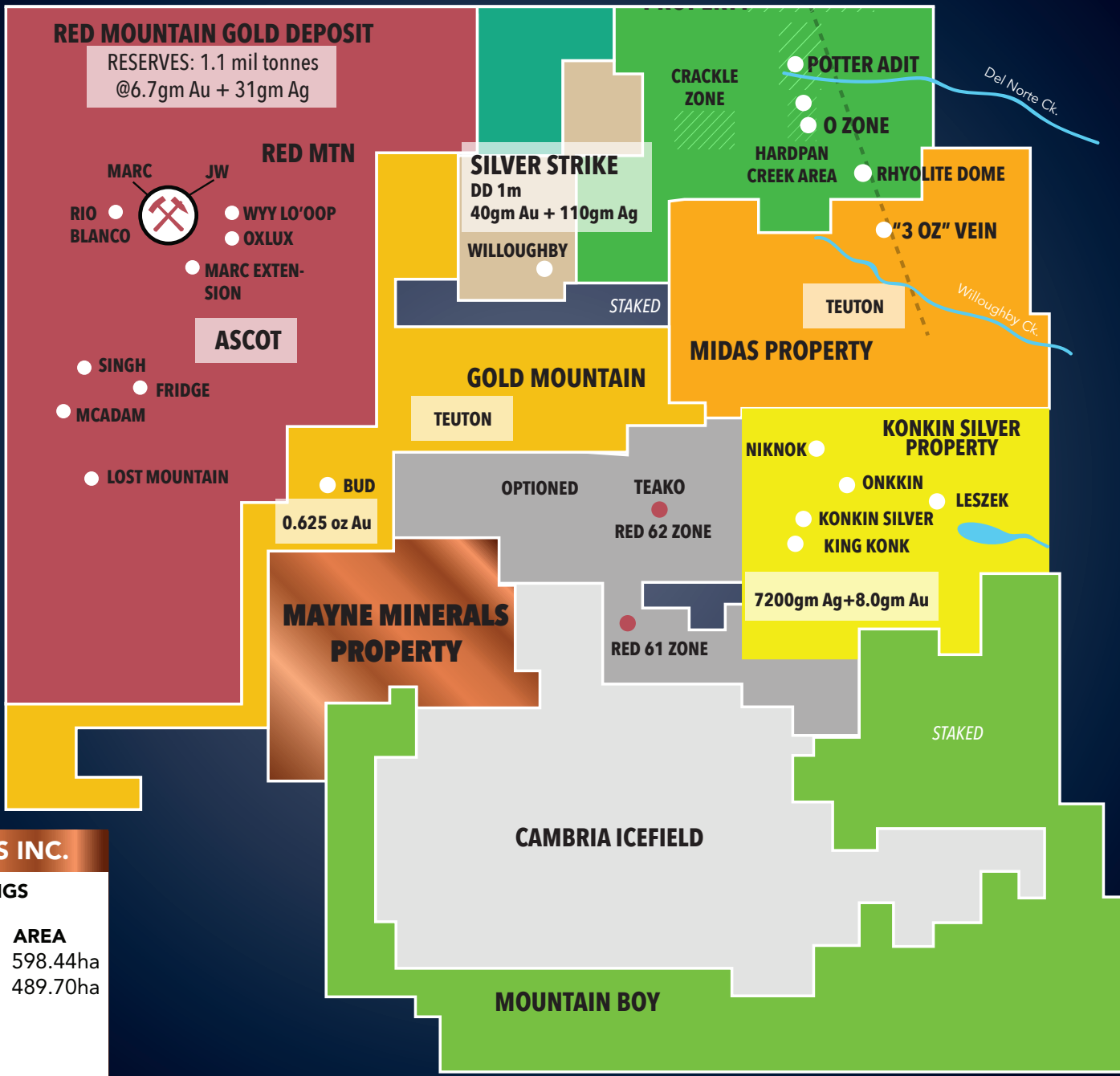
## ONE OF OUR ACQUISITION TARGETS AFTER IPO



2011  
QUALITY CONTROL REPORT

	METHOD ANALYTE UNIT MDL	7AR.1 CU % 0.001
<b>PULP DUPLICATES</b>		
80908	ROCK	
REP 80908	QC	
80912	ROCK	
REP 80912	QC	
80914	ROCK	
REP 80914	QC	
80917	ROCK	17.46
REP 80917	QC	17.50
80921	ROCK	10.82
REP 80921	QC	
<b>CORE REJECT DUPLICATES</b>		
80919	ROCK	12.91
DUP 80919	QC	
<b>REFERENCE MATERIALS</b>		
STD CCU-1C	STANDARD	24.79
STD CCU-1C	STANDARD	25.31
STD CDN-PGMS-19	STANDARD	
STD CZN-3	STANDARD	0.667
STD CZN-3	STANDARD	0.661
STD DS8	STANDARD	
STD DS8	STANDARD	
STD GBM997-6	STANDARD	0.365
STD NBLG	STANDARD	
STD OREAS153AR	STANDARD	
STD OREAS131B-A	STANDARD	
STD OREAS153AR	STANDARD	
STD OREAS131B-A	STANDARD	
STD OREAS45CA	STANDARD	





**MAYNE MINERALS INC.**

**PROPERTY HOLDINGS**

MTO#	CLAIM	UNITS	AREA
1079948	33		598.44ha
1080020	27		489.70ha
1080205	13		
1080206	12		
<b>TOTAL:</b>		<b>85</b>	

**MAYNE**  
**MINERALS INC.**

**ROBERT ROSENBLAT**

*PRESIDENT & CEO*

**604.760.0364**

**CHRISTINA RAO**

*CAPITAL MARKETS*

**604.723.7480**

**Rao@AscensionIR.com**